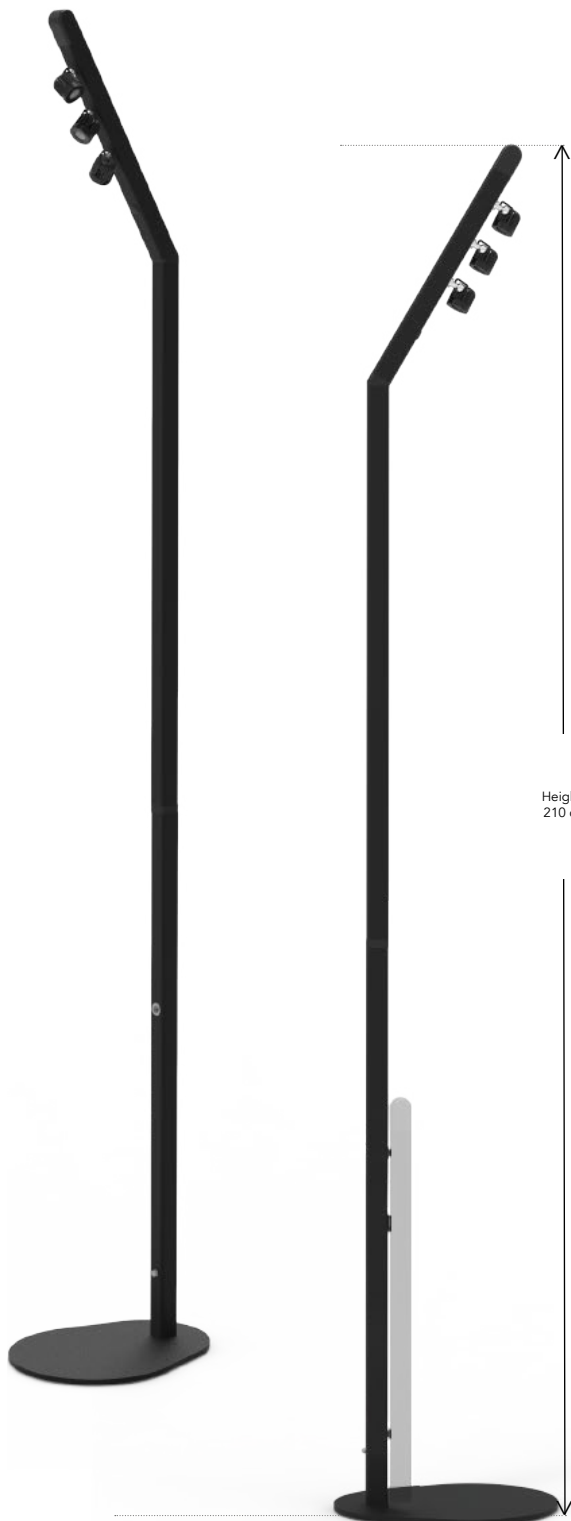


T3 SPECIFICATIONS



COMPOSITION

- 1x Inclined head with 3 adjustable LED spotlights l=370mm
- 2x extension modules l=850mm
- 1x full base (or open base - optional)

MATERIALS

- Extruded aluminium profile 6106T5
- AS13 Injected aluminium spotlight
- Hermalink® : injected polypropylene and stainless steel pins
- RF cap : injected 6-6 polyamide
- Steel base

FINISH

- Powder-coated epoxy paint
- Black RAL 9005 (fine texture)

LED POWER

- 13,5W (3x4,5W)

LED TECHNOLOGY

- LED Cree XPG2 HE

COLOR TEMPERATURE

- Standard : 3000K or 4000K (upon order)
- CCT Tunable White - optional
- CCT Hi CRI - optional

LIGHT INTENSITY

- Standard : up to 1000 lm
- Boost mode : up to 2000 lm
- PMMA 25° lens

POWER SUPPLY

- External mains unit 90 to 240V AC - 18V DC - 1,5A

BATTERY OPTION

- Battery : Li-Ion 14,4V 50Wh
- > **Autonomy** :
 - 6h autonomy on full
- > **Charger** :
 - 4 Li-ion cell charger
 - Constant charging current 1,6A
 - Constant voltage 16,8V

CONTROLLING

- Local / Manual : 3-step push-button dimmer (25%, 50%, 100%) + Boost (on mains only)
- Remote-controlling : RF - optional (Lako remote control or RF transmitter - extra)

HEIGHT

- 2,10m

WEIGHT

- 6 Kg

TEMPERATURE RANGE

- 0°C to +40°C

NORMS

- Class III
- IP43
- IK08
- CE

WARRANTY

- 2 years
- 6 months : Li-Ion Battery on normal use

OPTIONS

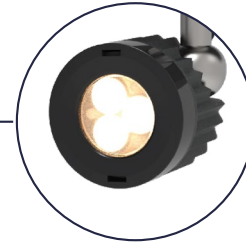


LED 3000K

- 3 LEDs 3000K per spotlight
- 13,5W (3 x 4,5 W)

LED 4000K

- 3 LEDs 4000K per spotlight
- 13,5W (3 x 4,5 W)



LED CCT (TUNABLE WHITE)

- 3 LEDs per spotlight : 3000K, 4000K, 5000K
- 13,5W (3 x 4,5 W)

LED CCT HI-CRI

- 3 LEDs per spotlight : 3000K, 4000K, 5000K
- 13,5W (3 x 4,5 W)
- CRI > 90

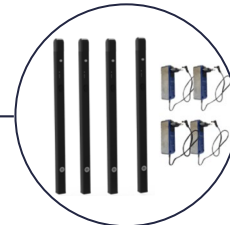


REMOVABLE BATTERY

- Battery : Li-Ion 14,4V 50Wh
- Plug-and-Play magnetised system
- Autonomy : 6,5h on full
- Fast charger 90 to 240V AC
- 14,4V DC 1,5 A max
- *Additional option*

BATTERY KIT

- 4 X Batteries (Li-Ion 14,4V 50Wh)
- 4 x Fast chargers (90 à 240V AC)
- 1 x waterproof case (850 X 440 X 158 mm)
- *Additional option*

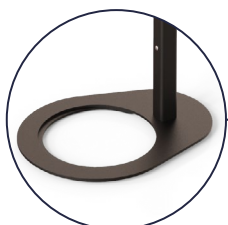


REMOTE CONTROLLING

- Lako or DMX transmitter - sold separately
- *Additional option*

TRANSPORTATION CASE

- For 2 x T3
- Pre-wired waterproof case
- Dimensions : 1177 X 440 X 158 mm
- *Additional option*



OPEN BASE

- Steel
- *Additional option*