

USER MANUAL

T4 / T4X

V1.2

Serial numbers from :

A001547 - *except A001563 et A001564*



THANK YOU FOR PURCHASING AN INNLED PRODUCT

« Dedicated to supporting a French industrial ecosystem, this product was developed and assembled by our team in our Montpellier workshop.

Because we attach special importance to the feedback of our customers, we invite you to contact us for any comment or suggestion. In order for us to continue to enlighten your ideas in the best possible way...»

L'équipe INNLED

TABLE OF CONTENTS

1

PRECAUTIONS FOR
USE
P4

2

CERTIFICAT OF
CONFORMITY
P7

3

INTRODUCTION AND
OVERVIEW
P8

4

T4 - CONTENT AND
ASSEMBLY
P12

5

MANUAL
MODE
P19

6

REMOTE
CONTROLLING
P22

7

BATTERY
P23

8

MAINTENANCE AND
CLEANING
P25

PRÉCAUTIONS D'EMPLOI

WARNING !

- Read the precautions in this manual before installing, switching on, using or maintaining this product.
- The following symbols are used to identify important security information of the product.



Warning !
High risk.
Risk of severe, even
deadly injury.



Warning !
LED light source.
Risk of ocular injury.



Warning !
Refer to the manual
before installing,
switching on or
repairing the product.



Warning !
Dangerous tensions.
Risk of severe injury or
electric shock..



Warning !
Hot surfaces
and risk of fire.



Warning! Risk Group 1 product according to EN 62471.

Avoid directly looking into the beam source and do not observe the beam source with an optical instrument or any device that would concentrate the light.

This product is for professional use only. It is not intended for home use. It presents risks of serious injury by burns, fire, electric shock and fall from heights if the precautions for use are not followed.

Do not install, use, or service this product unless scrupulously following the instructions given in this manual, you could otherwise be creating a security risk and damage that would not be covered by the warranty.



Follow the warnings listed below and respect all warnings printed in this manual.

Keep this manual for future use.

For updates of the documentation and any information relative to this product and the rest of the INNLED range, visit our website:
www.innled.fr

For any questions about the safe handling of this product, contact your INNLED dealer or call for technical assistance from Monday to Friday from 9am to 6pm: +33 9500 508 78.

Respect all local standards and regulations during the installation, when switching the product on for the first time.



PROTECTION AGAINST ELECTRIC SHOCKS

Do not use the product in the rain, do not immerse in water

- > Turn off the device before proceeding with installation or maintenance
- > Disconnect the power supply from the mains before proceeding to the installation or maintenance.

The power outlet or external power cut that powers the device must be located nearby and easily accessible in order to disconnect it from the mains.

Immediately isolate the mast from the mains if the mains plug, a gasket, a cable or any other component is visibly damaged, defective, deformed, wet or seems to be overheated.

Do not power the system until all repairs have been completed.

Before using the device, check that the equipment and cables are in perfect condition and certified for the electrical needs of connected devices.



PROTECTION AGAINST BURNS AND FIRES

Do not use the product if the ambient temperature (T_a) exceeds $40\text{ }^\circ\text{C}$ ($104\text{ }^\circ\text{F}$). The surface of the device can reach $65\text{ }^\circ\text{C}$ during use. Keep combustible and / or flammable materials away from the product. Do not stick filters, masks or any other material on the optical components. The Li-Ion battery pack should always be handled with care. In case of shock, check that there is no unwanted heating.



PROTECTION AGAINST EYE DAMAGE

Do not look directly into the light beam. Do not look into the beam with magnifying optical instruments (telescope, binocular glasses or equivalent instruments) that could concentrate the beam. Make sure that individuals can not look directly into the beam from the front of the spotlights when the product lights up suddenly.

This can occur when the power is turned on, when the system receives a DMX signal or when menu items are enabled. To minimize the risk of irritation or eye injury, disconnect the device from the mains or battery when it is no longer used and provide adequate illumination during work periods so that the eye pupils of people working nearby are naturally reduced.



PROTECTION AGAINST INJURY

The device should not be moved during use or when assembled, the modules could fall.

In case of a malfunction, immediately switch off the mast and disconnect it from the mains or battery. Do not try to repair a device that has been visibly damaged. Do not modify the unit if it is not described in this manual. Refer any service operation not described to a qualified technician.

CE DECLARATION OF CONFORMITY
DECLARATION CE DE CONFORMITE
CE KONFORMITÄTSEKTLÄRUNG
DECLARACIÓN DE CONFORMIDAD CE
DICHIARAZIONE DI CONFORMITÀ CE



We declare :

(Nous déclarons)
(Wir erklären)
(Declaramos)
(Noi dichiariamo)

Description / Type :

(Description / Type)
(Beschreibung / Typ)
(Descripción / Tipo)
(Descrizione/Tipo)

In accordance with :

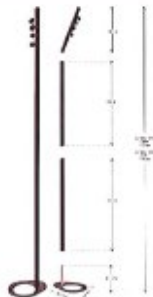
(En accord avec)
(In Übereinstimmung mit)
(De acuerdo con)
(In conformità con)

Referency document :

(En conformité avec)
(Referenzdokument)
(Documento de referencia)
(Documento di riferimento)

SAS INNLED
360 avenue des compagnons
34170 CASTELNAU-LE-LEZ
FRANCE

UNIVERSAL LIGHTING MAST
TECNOPAR T4 or T4x or T4c



2006/95/EC The low voltage directive (LVD)
2004/108/EC The Electromagnetic Compatibility directive (EMC)
2014/53/EU Radio Equipment Directive (RED)

EN55015	Limits and methods of measurement of radio disturbance characteristics of electrical lighting and similar equipment
EN61547	Equipment for general lighting purpose. EMC immunity requirements
EN60598-1/2	Luminaires. General requirements and test
EN60598-2/4	Luminaires. Particular requirements - Portable general purpose lighting
EN62031	LED module for general lighting. Safety specifications
EN62471	Photo biological safety of lamps and lamp systems. Image projector
EN61347-1/2/3	Lamp control gear. Particular requirements for DC or AC supplied electronic control gear for LED modules
EN300328	Electromagnetic compatibility and Radio spectrum Matters (ERM)
EN301489-1/17	Electromagnetic compatibility
EN62479	Assessment of the compliance of low power electronic and electrical equipment with the basic restrictions related to human exposure to electromagnetic fields (10 MHz to 300 GHz)
EN300220-2	Harmonised Standard for access to radio spectrum for non specific radio equipment
EN301489-1/3	ElectroMagnetic Compatibility (EMC) standard for radio equipment and services
EN62311	Assessment of electronic and electrical equipment related to human exposure restrictions for electromagnetic fields (0 Hz - 300 GHz)
EN61000-3.2/3.3	Electromagnetic compatibility (EMC)

SAS INNLED

360, avenue des Compagnons
34170 CASTELNAU-LE-LEZ
T4L - 00 10 85 08 78
Siret : 751 597 600 00020 *APE : 2740Z

Eric GASIGLIA
SAS INNLED CEO
Castelnau-Le-Lez,
le 15/09/2019

3

INTRODUCTION AND OVERVIEW

The T4 is a battery-powered lighting mast, which includes 3 LEDs per spot and a choice of color temperatures :

- 3000K
- 4000K
- CCT Tunable white
- RGB

It is packaged by a sets of 2 or 3 - depending on the presence or not of extra extension tubes - in a case equipped with integrated chargers. You can remote control the T4 with :



DMX transmitter TA51:
Only controllable with a
DMX console

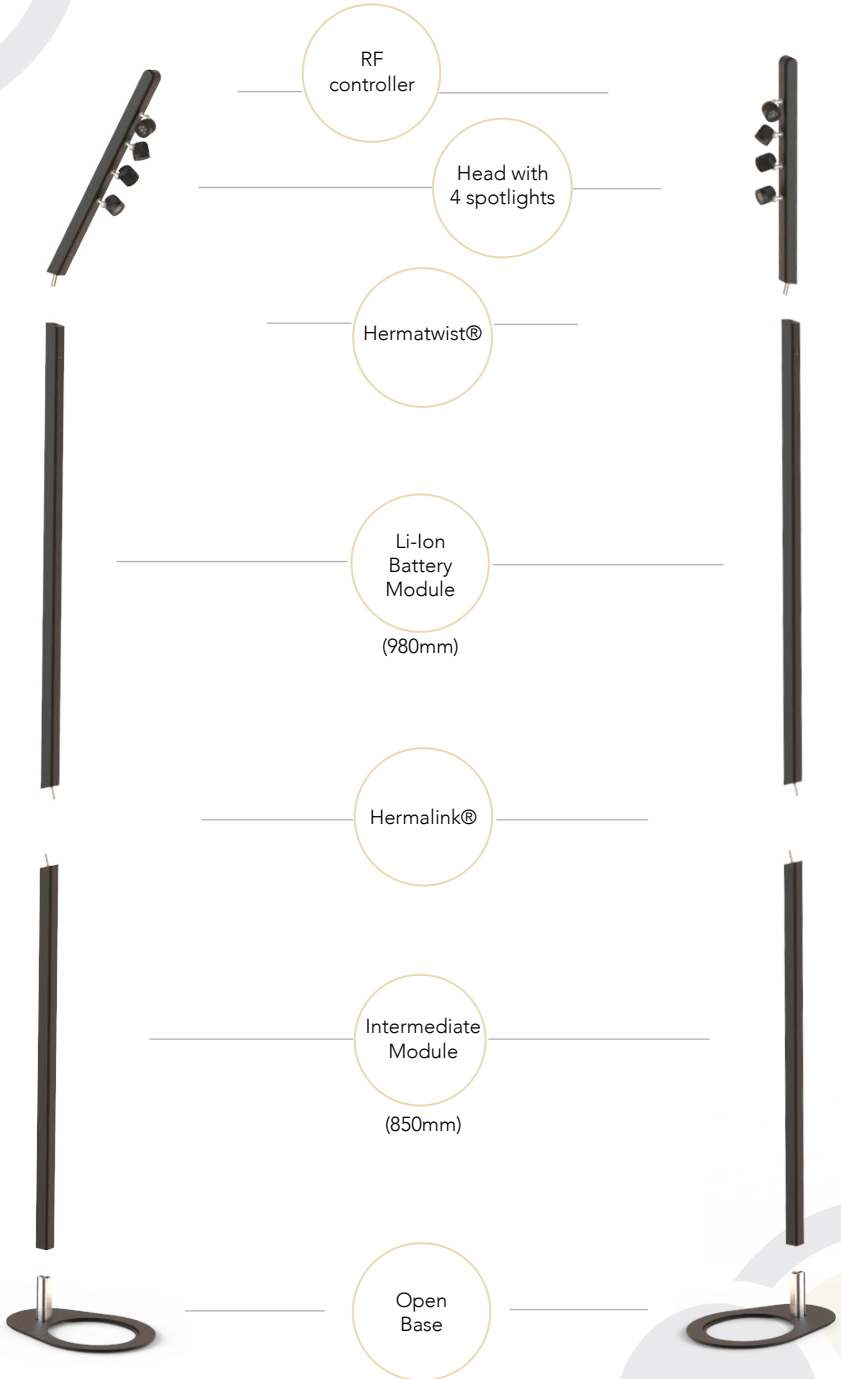


LAKO remote control
Integrated transmitter

BEFORE USING THIS PRODUCT FOR THE FIRST TIME

- 1 Carefully read the precautions on page 4 before the installation, switching on, using or maintaining of the device.
- 2 Unpack the device and make sure that no transport incident has damaged it. Never attempt to repair a damaged device.
- 3 Before starting up the mains, make sure the sector voltage and frequency correspond to the needs of the device.
- 4 Visit the Download page on our website (www.innled.fr) for the latest updates of the documentation and all technical information.

OVERVIEW T4 - STANDARD CONFIGURATION

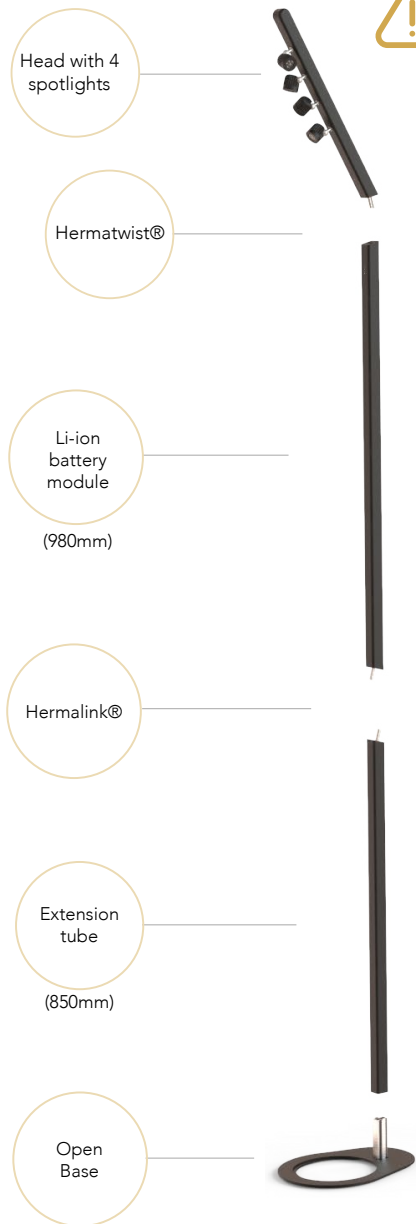


OVERVIEW T4 + EXTENSIONS (OLD T4~~XL~~)



The T4 is now proposed with 2 extra extension tubes (200mm and 500mm) as well as an extra ballast.

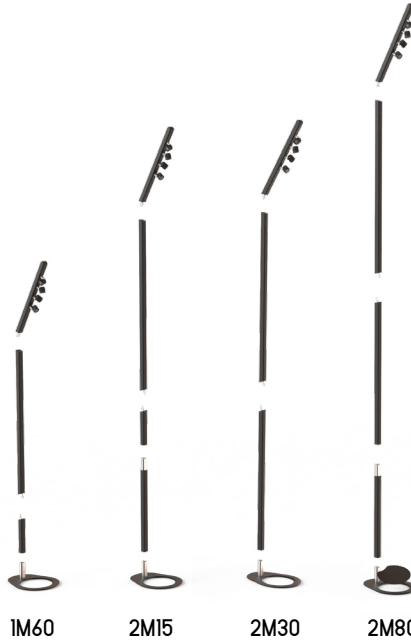
Until 2022, the T4 + extensions + ballast was referenced as T4~~XL~~. The extensions and the ballast are now options of the T4 but the functionalities and configuration possibilities are identical to the T4~~XL~~.



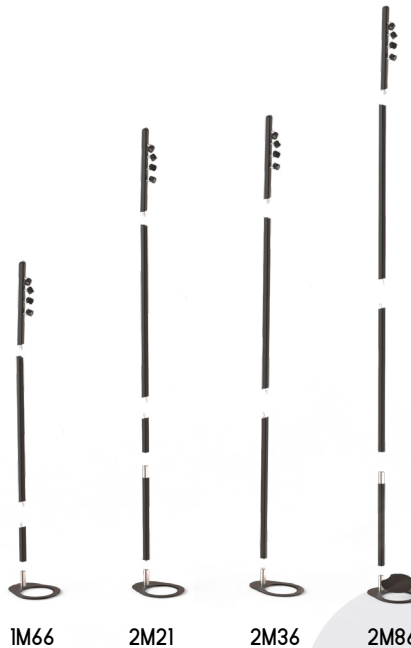
These two additional extensions allow 4 possible configurations :



Any other configuration, in particular >280 cm is STRICTLY PROHIBITED



Any other configuration, in particular >280 cm is STRICTLY PROHIBITED



4

T4 - CONTENT AND ASSEMBLY



The transportation cases can contain either :

> 2 x (T4 + 500mm ext. tube + 200mm ext. tube + ballast) ——— b

OR

> 3 x (Standard T4 = without ext. tubes or ballast) ——— a



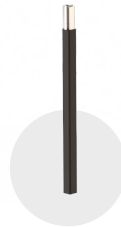
3 OR 3 HEADS
WITH 4
SPOTLIGHTS



2 OR 3
BATTERY
MODULES



2 OR 3
850MM
EXT. TUBES



2 x 500mm
ext. tubes



2 x 200mm
ext. tubes

Options



2 OU 3
OPEN BASES



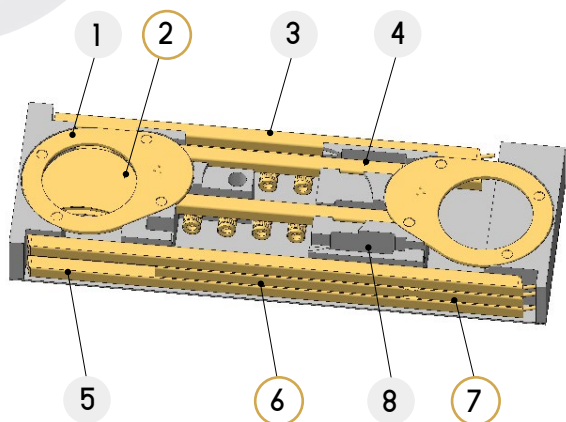
2 x
Ballasts



2 OR 3
CHARGERS

Options

CONTENT OF THE CASE



- 1 OPEN BASE
- 2 BALLAST
- 3 850MM EXT. TUBE
- 4 HEAD
- 5 BATTERY MODULE
- 6 500MM EXT. TUBE
- 7 200MM EXT. TUBE
- 8 CHARGERS



The modular assembly of the T4 offers not only a **straight or an inclined position** but also a choice of **4 possible height configurations**.

The orientation of some modules (head + extension) changes, depending on the configuration you desire.

Carefully read the instructions to turn your T4 around.



CONTENT CASE – T4

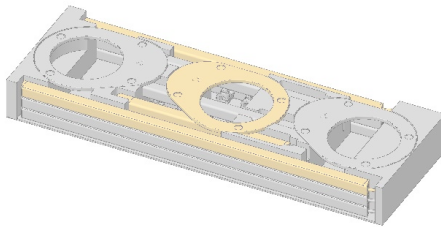
T4 cases have been designed to assemble one mast after another, taking them out in a logical order facilitating the operations.

REMINDER

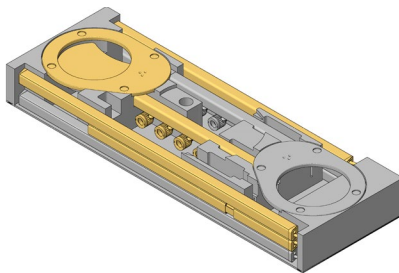
The transportation cases can contain either :
> 2 x (T4 + 500mm ext. tube + 200mm ext. tube + ballast)

OR

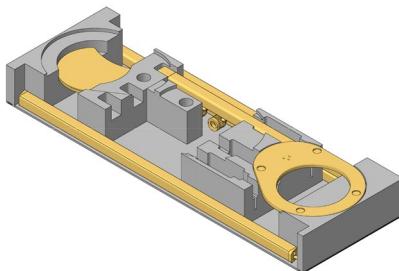
> 3 x (Standard T4 = without ext. tubes or ballast)



MAST N°3



MAST N°2



MAST N°1

2M80 ASSEMBLY (WITH OPTION OF EXT. TUBES)

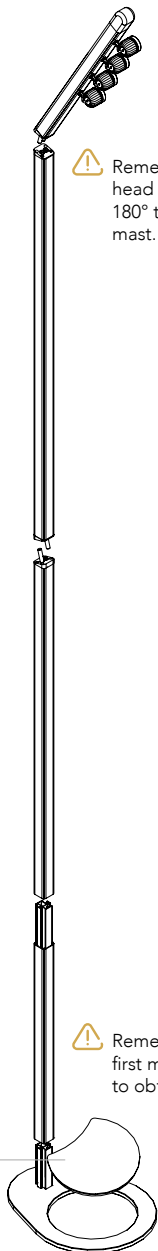


Any other configuration, in particular >280 cm is STRICTLY PROHIBITED.

BALLAST



OBLIGATORY



HEAD

⚠ Remember to turn the head module around 180° to obtain a straight mast.

BATTERY MODULE

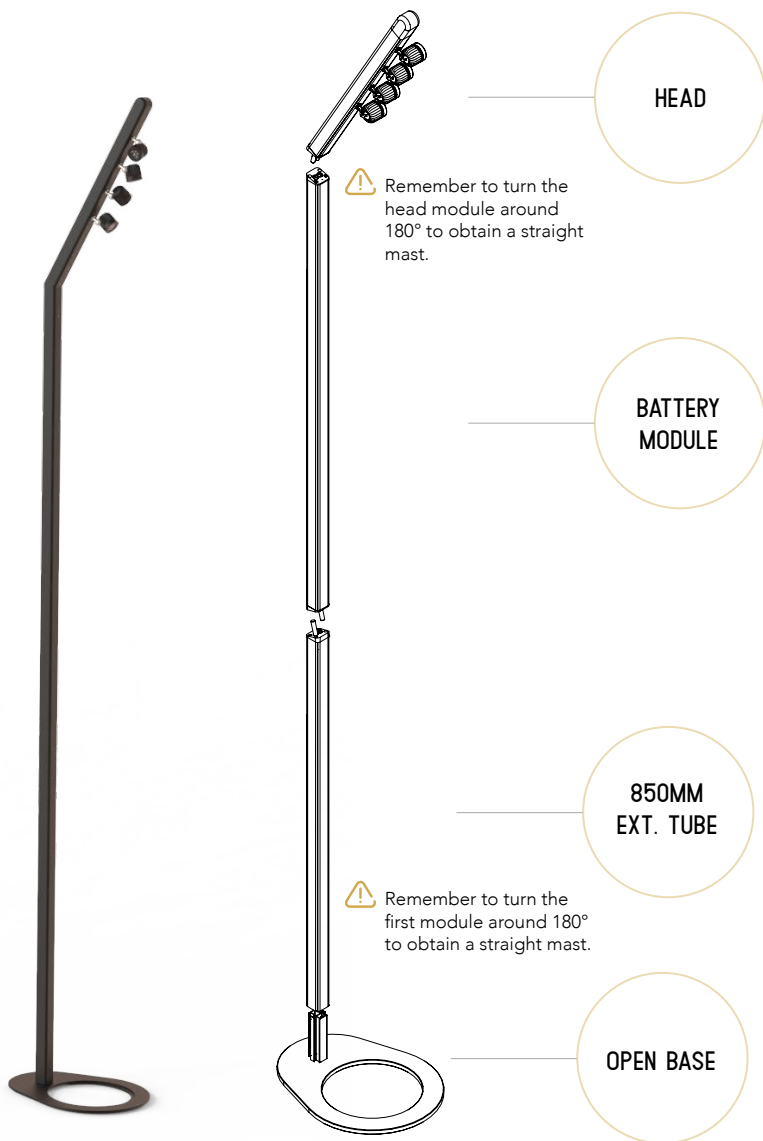
850MM
EXT. TUBE

500MM
EXT. TUBE

⚠ Remember to turn the first module around 180° to obtain a straight mast.

OPEN BASE

2M30 ASSEMBLY (STANDARD CONFIGURATION)



2M15 ASSEMBLY (WITH OPTION OF EXT. TUBES)

The 2.15m T4 can be mounted in low ceiling spaces in which the 2.30m T4 does not fit.



HEAD

⚠ Remember to turn the head module around 180° to obtain a straight mast.

BATTERY
MODULE

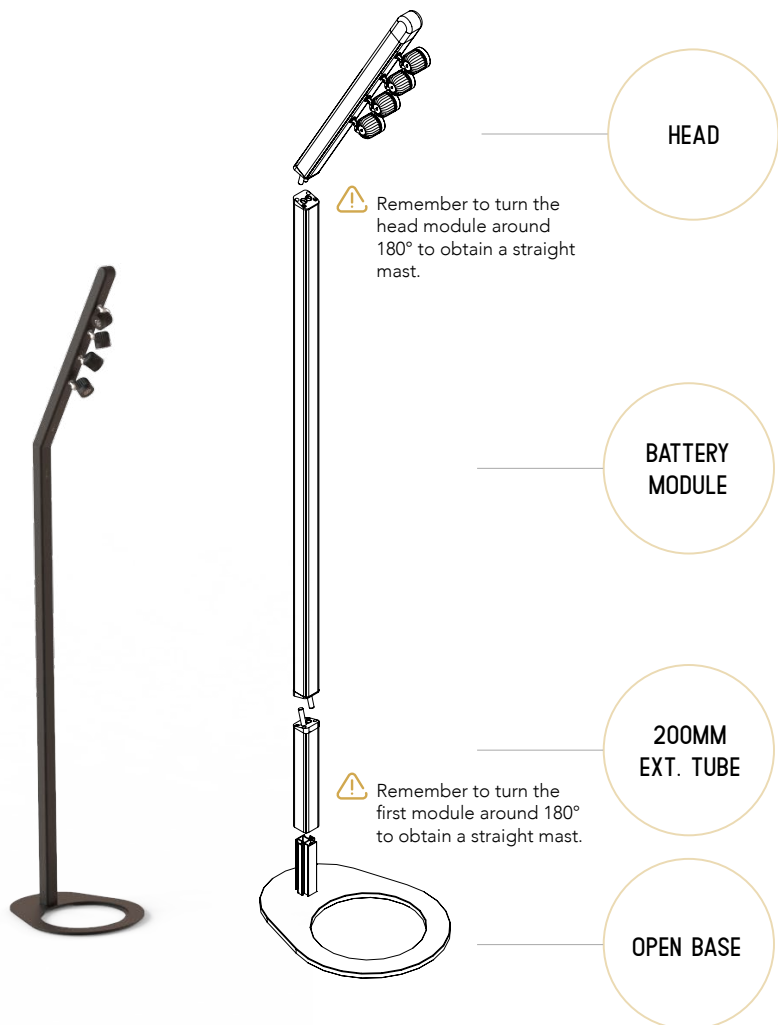
200MM
EXT. TUBE

500MM
EXT. TUBE

⚠ Remember to turn the first module around 180° to obtain a straight mast.

OPEN BASE

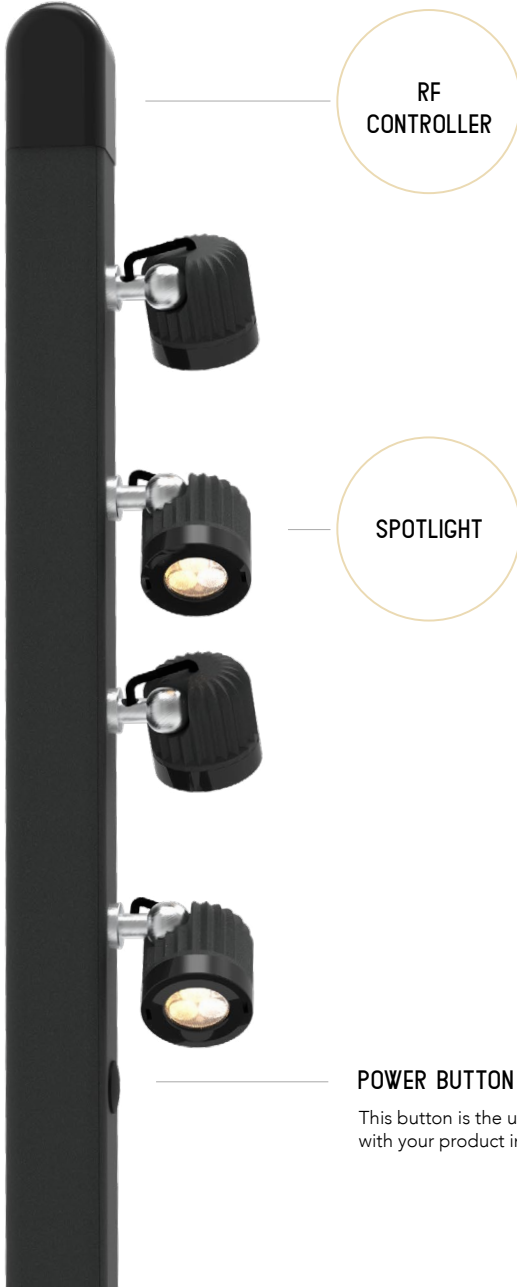
IM60 ASSEMBLY (WITH OPTION OF EXT. TUBES)



5

MANUAL MODE : HEAD OVERVIEW

HEAD



RF
CONTROLLER

SPOTLIGHT

POWER BUTTON AND MENU (1)

This button is the unique interface
with your product in Manual mode

MANUAL MODE

USING YOUR MAST FOR THE FIRST TIME

1. A short press on the button **switches the mast on**. A chase will then start on the spotlights indicating a standard test of the LEDs.

> If a remote control or RF transmitter is detected the product will automatically connect to the RF frequency and can now be remote controlled from a distance.

The RF detection only operates during the switch on of the mast.

> if no transmitter or remote control is detected then the product will switch on directly after the chase on the spotlights.

2. Once the product is switched on, each press on the button will **change the light intensity** (25%, 50%, 75%, 100%)

3. A quick double press allows you to enter **Boost Mode**.

> 5 successive flashes will indicate you have entered into Boost Mode.

> Any new press on the button will exit the Boost Mode and return into the Light Intensity Mode.

Beware, no action on the button for 30 seconds will **lock the mast** and no other action is possible - this is to avoid any inadvertent handling of the product.

From this point on, only a long press on the button allows you to switch off the mast.



MANUAL MODE

CHANGING THE BASE COLOUR OF YOUR MAST

The Base Colour is the colour temperature on which your mast switches on. This parameter is memorised in the mast even if the mast is not switched on or if the battery is not connected.

1. A long press on the button until the spotlights quickly flash allows you to enter directly into the Modification of the Base Colour Mode.

2. From that point on, each press on the button changes the Base Colour.

> Once the desired colour is obtained, wait for the memorization of the Base colour, indicated by a serie of flashes. The mast switches back on to the desired colour.



6

REMOTE CONTROLLING

THE MASTS CAN BE REMOTE CONTROLLED IN TWO WAYS :

1. With LAKO, the DMX remote control.

LAKO allows you to control from one and only device - the DMX HF transmitter is integrated to the remote control. Effects, colors and intensity are adaptable.

For more information, please refer to the LA'KO user guide.



2. From a console + HF transmitter (ref TA51)

Note on TA51 transmitter.

TA51 transmitters assign the DMX addresses of the T4 lighting masts via the ASSIGN menu.

The T4 lighting masts have 5 DMX channels, the TA51 transmitter manages 512 DMX channels per universe. The TA51 transmitter offers 31 DMX universes and 21 frequencies.

For instructions on TA51, please refer to its user guide.



**CONSOLE +
(TA51) RF TRANSMITTER**

DMX CHANNEL	CCT	RGB
1	Dimmer	Dimmer
2	Strobe	Strobe
3	3000K	Red
4	4000K	Green
5	5000K	Blue

7

BATTERY



The battery module is equipped with 4 LEDs that indicate the charging status of the batteries in real time.

The LEDs give different types of information.

There are 2 modes:

- In use
- Charging

JACK

BUTTON

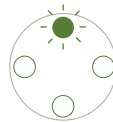
> with LEDs for indication of the battery status

LEDS AND STATE OF CHARGE

1. ACTIVE MODE :

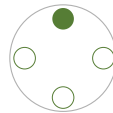
When the T4 is operating, it is possible to know the battery charging status.

To do so, press the button, the LEDs will show you the status of the batteries according to the following diagram :

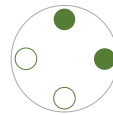


< 5%

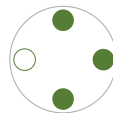
Flashing LEDs
Battery discharged



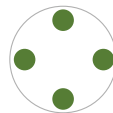
BETWEEN 5 AND 25%



BETWEEN 25 AND 50%



BETWEEN 50 AND 75%



BETWEEN 75 AND 100%

Battery charged

2. CHARGING MODE :

When the T4 is charging, all LEDs light up automatically.

8

MAINTENANCE ET NETTOYAGE

Read the Precautions on page 4 before servicing.

- Refer any maintenance operation not described in this manual to a qualified service technician.
- Disconnect the product from the mains before cleaning.
- Perform maintenance in an area where the risk of falling components, tools or any other material is discarded.

Excess dust, smoke and particle aggregates degrade performance and cause overheating that can damage the device. The damages caused by a hazardous cleaning or insufficient maintenance are not covered by the warranty of the product.

1. REPAIR

There are no components inside the unit which can be repaired or serviced by the user.

Do not open the different modules of the product.

Do not try to repair the device yourself, this could create a risk for safety or damage that would not be covered by the INNLED warranty. Any other intervention must be carried out by the INNLED After Sales Service.

2. CLEANING

The cleaning of the optical components must be carried out regularly to optimize the light output.



Do not use strong pressure for cleaning



Work in a clean and well-lit area.



Do not use products containing solvents or abrasives, they could damage the surfaces.

To clean the device:

Check that the device is turned off.

Clean the surfaces with a microfiber cloth soaked in cleaning window solution. Rub gently.

Clean the lenses of the LEDs softly with a clean cloth soaked in a mild detergent solution.

Do not rub the surfaces too hard. Dry with a soft and clean cloth, or low pressure compressed air. Remove any remaining particles with a wipe.

Check that the unit is completely dry before switching on.

INNLED TECHNICAL AFTER SALES SERVICE

From Monday to Friday
from 9am to 6pm

360 Avenue des Compagnons
34170 Castelnau-le-lez

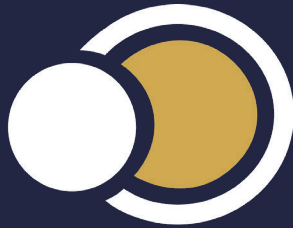
+339 500 508 78
sav@innled.fr



Recycling of products

INNLED products are supplied in compliance with Directive 2002/95 / EC of European Parliament and the Council of the European Union on the Reprocessing of Electrical and Electronic Equipment (WEEE) when applicable.

Help safeguard the environment by ensuring that this product will be recycled!
Contact us to learn more about the local recycling provisions of our products.



INNLED

REVEALING SENSES

360 avenue des Compagnons
34170 Castelnau-le-Lez
FRANCE

contact@innled.fr

www.innled.fr

